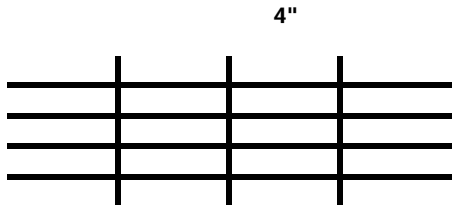


**WELDED STEEL GRATING  
MILD CARBON STEEL**

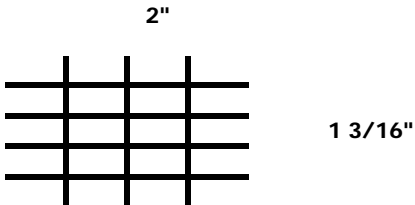
**W/B (STANDARD)**

Approved for all general purposes.



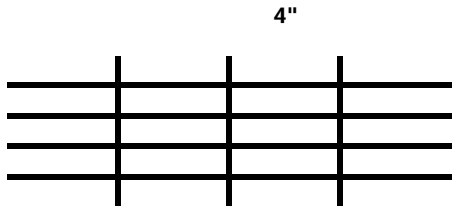
**W/F (SPECIAL ORDER)**

Same as type W/B but with close cross bars for conditions where more steel area is required.



**W/D (SPECIAL ORDER)**

Close bearing bars. Best for heavy public traffic, or where smaller openings or increased carrying capacity are required.



**W/DF (SPECIAL ORDER)**

With closer cross bar and bearing bars. For conditions requiring greatly reduced net openings.

